

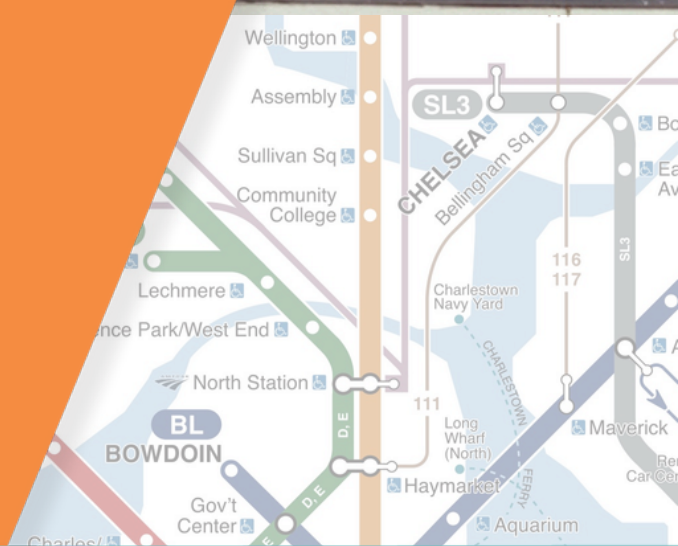


# Assembly Connect Annual Report

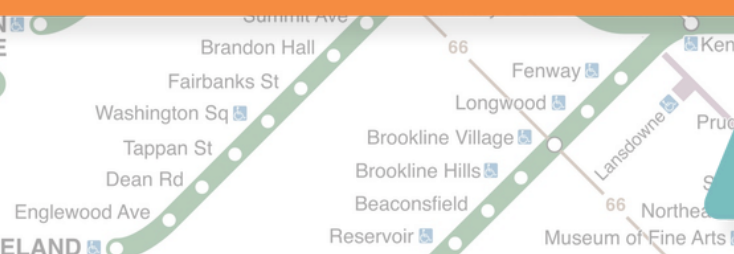
Prepared by



**NORTHEAST**  
CONSULTING GROUP



# 2023



# Table of Contents

---

Letter from the Executive Directors	1
Mission & Board of Directors	2
Assembly Connect Mission	
Board of Directors	
Our Staff	3-4
Residential, Commercial, and Retail Members	
Financial Statement	5-6
End of Year Statistics	
Mode Data	7-9
TripConnect	
Average Daily Vehicle Trips	
MBTA Orange Line Assembly Station Boardings	
Bluebikes	
Accomplishments	10-12
Outstanding TMA Award	
MBTA Retail Pass Program	
MBTA Residential Pass Program	
Walk for Kicks	
MassCommute Car-Free Day	
Marketing, Events, and Outreach	13-14
Bike Breakfast	
Employee Transportation Coordinator Social Hour	
Tabling Events	
2023 Events	15
Member Spotlight: LEGO Discovery Center	16-17
Advocacy & Collaboration	18
Looking Ahead	19

# Letter from the Executive Directors

---

Dear members and friends of Assembly Connect,

2023 marks five years since our founding members came together to form Assembly Connect, the first transportation management association (TMA) in the City of Somerville. It seems fitting that this would be the same year that Assembly Connect would be named the Outstanding TMA in the country by the Association for Commuter Transportation (ACT). This award represents the support, guidance and leadership of our board, and the hard work and dedication of the TMA staff who continue to seek out innovative solutions to reducing drive alone trips to Assembly.

In 2023, we launched our first-ever pedestrian incentive program; which rewards participants who log walking trips to/from or within Assembly with prizes and a gift card for a brand-new pair of sneakers of their choice from one of the five sneaker retailers at Assembly. In 2023, Assembly grew its program participation by 87% percent overall and added 890 new users to our Trip Connect platform. Collectively these users logged over 17,000 sustainable trips; these trips helped reduce the overall carbon emissions at Assembly by 22.8 tons.

The year continued to see much -needed improvements to the aging infrastructure of the highway and transit system in our area. Assembly Connect staff served on the MassDOT Transit Mobility Group, formed to address the eight-week closure of the Sumner Tunnel in the summer of 2023. This group of key stakeholders, TMA, transit advocates, MBTA and MassDOT staff met for several weeks prior to the closure to ensure that the public was aware of the closure and to provide sustainable transportation options and marketing to mitigate the impacts on traffic. The group will convene again for the closure planned in the summer of 2024 too. In November of 2023, the MTBA unveiled a comprehensive plan to eliminate slow zones with twenty segmented, multi-day closures to address long-neglected repair needs. Assembly Connect has been there for its riders during prior shutdowns and will work closely with TMA members and colleagues at the MBTA to ensure that riders are informed of service changes.

Assembly Connect continued to grow its membership in 2023, with the Assembly Innovation Park/BioMed Realty and 74 Middlesex/Greystar joining as associate members. It is very exciting to see the buildings rise and the TMA staff looks forward to welcoming new commercial tenants in 2024. In addition, TMA staff welcomed sixteen new retail tenants to Assembly Row and worked with them to provide a monthly MBTA subsidy for their employees through the Assembly Connect MBTA pass program.

As 2023's Outstanding TMA, Assembly Connect is proud of what we have been able to accomplish with the help and support of our board, our members, and our partners. We are excited to serve as an example to others in the region and the country of how transportation demand management can be used to build a vibrant, accessible, and thriving community. We look forward to building on the success of the past five years and are excited to see what 2024 brings.

Sincerely,



Allison Simmons, Co-Executive Director  
Assembly Connect



Andrea Leary, Co-Executive Director  
Assembly Connect



# Mission & Board

## Assembly Connect Mission

Assembly Connect is a membership-based, non-profit, transportation management association (TMA). Assembly Connect seeks to provide creative, effective, sustainable transportation solutions to reduce traffic and enhance the quality of life, accessibility, and economic vitality of the greater Assembly Square neighborhood.

## Board of Directors



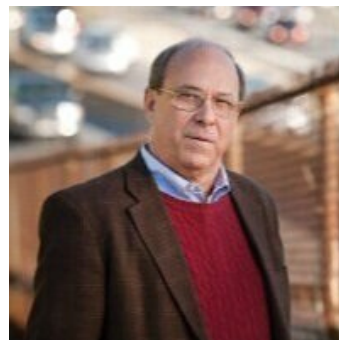
**Sarah Forde Rogers**  
TMA Board President,  
Senior Director of  
Development, Federal  
Realty Investment Trust



**Jay Phillips**  
TMA Board Treasurer,  
Senior Director of Real  
Estate & Facilities, Mass  
General Brigham



**Brad Rawson**  
TMA Board Clerk, Director  
of Transportation &  
Infrastructure, City of  
Somerville



**Wig Zamore**  
TMA Board Director,  
Board of Directors,  
Mystic View Task Force  
and Somerville  
Transportation Equity  
Partnership



*“Assembly Connect provides valuable resources for those who live, work and play in the ever-expanding Assembly Square neighborhood. By providing sustainable, accessible and innovative transportation solutions, Assembly Connect continues to be an integral part of the community. As the density in the neighborhood continues to grow, Assembly Connect’s mission to reduce single occupancy vehicle trips will become that much more important.”*

*Sarah Forde Rogers, Assembly Connect Board President*



**Daniel Wells**  
TMA Board Member,  
Director of Property  
Management, BioMed  
Realty





# Our Staff

---



**Stephanie Le**, *Assistant Director of Marketing & Programs*



**Andrea Leary**, *Executive Team Principal and co-founder of NorthEase Consulting Group*



**Olivia Saccocia**, *Marketing & Programs Coordinator*



**Allison Simmons**, *Executive Team Principal and co-founder of NorthEase Consulting Group*



**Madelyn Langley**, *Marketing & Programs Coordinator*

# Residential & Commercial Members



# Retail Members

Adidas	Club Pilates	Mass. General Physicians Org.	Southern Kin Cookhouse
Aerie	Columbia Factory Store	Mike's Pastry	Squeeze Juice Co.
All She Wrote	Converse	Muse Paintbar	Staples Connect
AMC Assembly Row 12	CVS Pharmacy	Nike Factory Store	Starbucks
American Eagle	Cyclebar	Orangetheory Fitness	Steve Madden
An Nam	Earls Kitchen + Bar	OshKosh B'gosh	Sunglass Hut
Ann Taylor Factory Store	Ernesto's Pizzeria	Outback Steakhouse	Sweathouz
AR Nail Bar & Lounge	Express Factory Store	PAPAGAYO	Sweetgreen
A-ROW Express	Fragrance Outlet	Paper Source	T.J.Maxx & Homegoods
Ashley Furniture	FRANK	Parla	Tatte Bakery and Cafe
Assembly Dental	Fuji at Assembly	Parrelli Optical	The Barber Shop
Banana Republic Factory Store	HeyDay	Polo Ralph Lauren	The Lash Lounge
Bath & Body Works/White Barn	Its' Sugar	PUMA	The Row Hotel
Bed Bath & Beyond	J. Crew Factory	Pure Barre	The Smoke Shop
Bliss Nails & Spa	J.P. Licks	Purple	Tillys
Bobbles & Lace	Juicy Greens	Reebok	Title Boxing Club
Brooks Brothers Factory Store	Kay Jeweler's Outlet	Reflections at the Row Hotel	Tony C's Sports Bar
Burlington Coat Factory	Laser Away	Restore Hyper Wellness	Trader Joe's
Caffè Nero	Le Creuset	River Bar	Tribos Peri Peri Chicken
Cambridge Savings Bank	Le Macaron	Ruth's Chris Steak House	Union Square Donuts
Capital One Café	Legal on the Mystic	Rumble Boxing	Vineyard Vines Outlet
Carter's	Legoland Discovery Center	Sabroso Taqueria	Warby Parker
Chase	Levi's	Saks Off 5th	Xfinity
Christmas Tree Shops	Loft Outlet	Salt and Stone	Yakitori Totto Ramen
Clarks Outlet	Lucky Strike Social	Sephora	Yankee Candle
Clover Food Lab	Lululemon	Shake Shack	Zo Greek
Club Pilates	Madison Reed Color Bar	Soma Aveda Salon and Spa	Zwilling

# Financial Statement

## 2023 Assembly Connect Statement of Income & Expenses January 1, 2023 - December 31, 2023

### 2023 Income

#### Dues

Member Dues Received	\$416,601.81
Member Dues Outstanding	\$0.00
<b>Total Dues Income</b>	<b>\$416,601.81</b>

#### Reserved Cash

2022 Accounts Payable	\$77,385.81
2022 Retention Fund ( <i>for major capital projects</i> )	\$25,998.27
2022 Unused Contingency	\$45,734.70
Free Cash	\$76,179.85
<b>Total Reserved Cash</b>	<b>\$225,298.63</b>

**2023 Total Assets** **\$641,900.44**

### 2023 Expenses

#### 2022 Accounts Payable

NorthEase Labor & Program	\$62,881.81
OneCommute CRM Database	\$14,504.00
<b>Total 2022 Accounts Payable</b>	<b>\$77,385.81</b>

#### Labor & Program Expenses

2023 Labor & Program Expenses	\$364,928.12
2023 Accounts Payable ( <i>Nov &amp; Dec 2023</i> )	-\$35,085.61
<b>Total 2023 Labor &amp; Program</b>	<b>\$329,842.51</b>

2023 Dues Income Received	\$416,601.81
Total 2023 Expenses & 2022 Accts. Payable	\$407,228.32

**Excess Revenue Over Expenses** **\$9,373.49**

**Reserved Cash** **\$225,298.63**

**Cash Balance** **\$234,672.12**

## Assembly Connect Balance Sheet January 1, 2023 - December 31, 2023

### Assets

2023 Dues Received	\$416,601.81
2023 Outstanding Dues	\$0.00
2022 Accounts Payable	\$77,385.81
2022 Retention Fund	\$25,998.27
2022 Unused Contingency	\$45,734.70
Free Cash	\$76,179.85

**Total Assets** **\$641,900.44**

### Liabilities

2023 Expenses	\$364,952.74
2023 Balance of Budgeted Expenses	\$8,988.26
2023 Contingency	\$25,614.00
2023 Retention Fund	\$17,046.86
2022 Accounts Payable	\$77,385.81
2022 Retention Fund	\$25,998.27
2022 Unused Contingency	\$45,734.70
Free Cash	\$76,179.80

**Total Liabilities** **\$641,900.44**



# End of Year Statistics

**PUBLIC CYCLE ROW**

- Each guest using the Bike Storage Room is responsible for controlling and monitoring access to the bicycle storage room.
- Only store bicycles on the rack. Do not block the entrance to the Bicycle Storage Room or position bikes in a manner that will impede other from entering or exiting the area.
- Smoking is not permitted in the Bicycle Storage Room.
- Report any suspicious activity, vandalism or damage to the building security.
- Bicycle shoes should not be worn in the lobby or elevator as they may damage flooring.
- All bikes are stored at your own risk. Management is not responsible for damaged or stolen bikes.

-  17K  
Alternative Trips
-  74,196 mi  
Alternative Distance  
Traveled
-  23 tons  
of CO2 Reduced
-  \$29K  
Money Saved
-  18K  
Total Trips Logged
-  78,284 mi  
Total Distance Traveled
-  1.4 Million  
Calories Burned

## TripConnect

TripConnect is Assembly Connect’s “one-stop-shop” for all the transportation services the TMA has to offer. Participants use this free resource to join Assembly Connect’s programs, log commutes, plan trips based on mode, and connect with carpool matches. TMA staff also use the data collected in TripConnect to evaluate program efficacy and understand how individuals travel to and from the district.

Being the fifth year that Assembly Connect has used TripConnect, TMA staff decided to clean up the database by removing accounts that have been inactive for one or more years. Even with deactivating over 500 accounts, TripConnect saw an overall increase in participation compared to 2022.

As of January 1st, there were 1,730 participants in TripConnect, which is a 25% increase from last year.

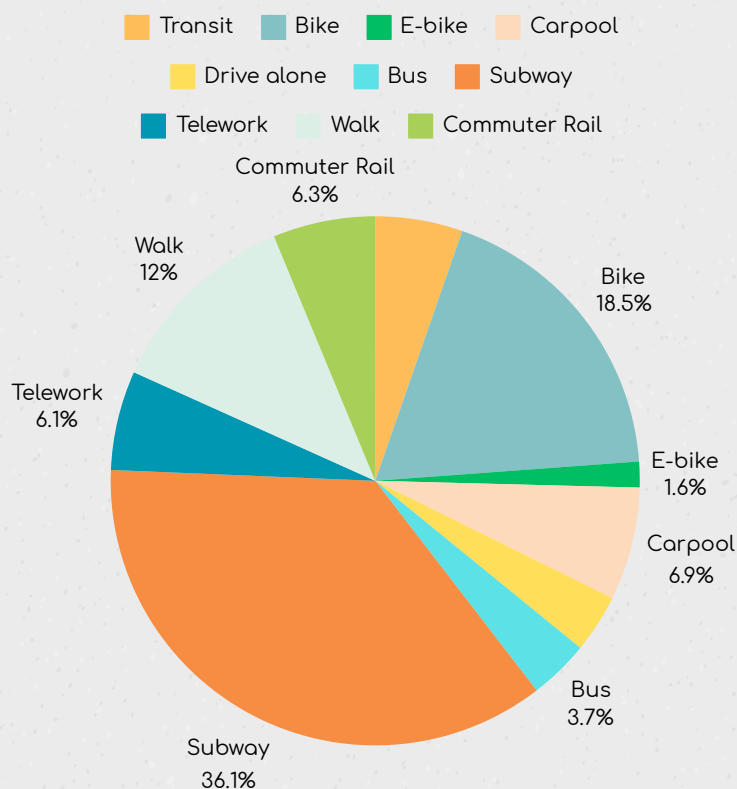
25%

increase in the number of participants in TripConnect for 2023

## TripConnect 2023 Network Statistics

- 17K Alternative Trips
- 74,196 mi Alternative Distance Traveled
- 22.8 tons of CO2 Reduced
- \$29K Money Saved
- 18K Total Trips Logged
- 78,283.7 mi Total Distance Traveled
- 1.4 Million Calories Burned

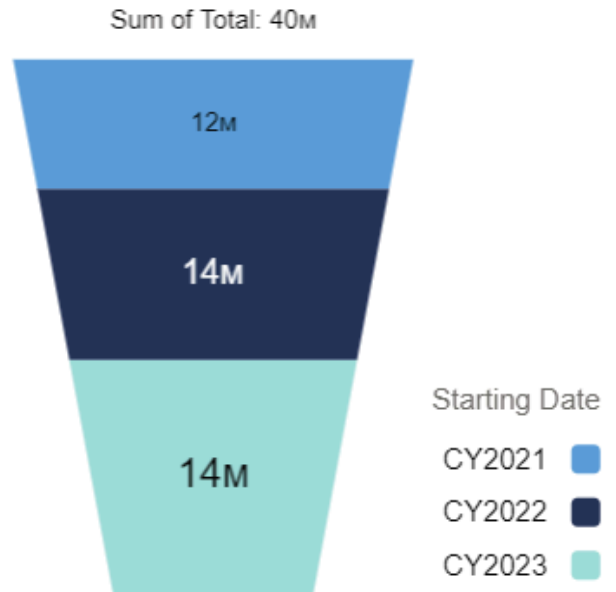
## TripConnect 2023 Mode Split Data



## Average Daily Vehicle Trips

Assembly Connect tracks vehicles coming in and out of the district through automated traffic management counters at intersections. To ensure that continued development and growth at Assembly does not impact mobility, Assembly Connect has a goal to keep the average daily trip count below 42,000. Year over year data shows that Assembly Connect was successful in 2023 in keeping the trips steady at approximately 14 million this year, with a daily average of 38,997 vehicle trips.

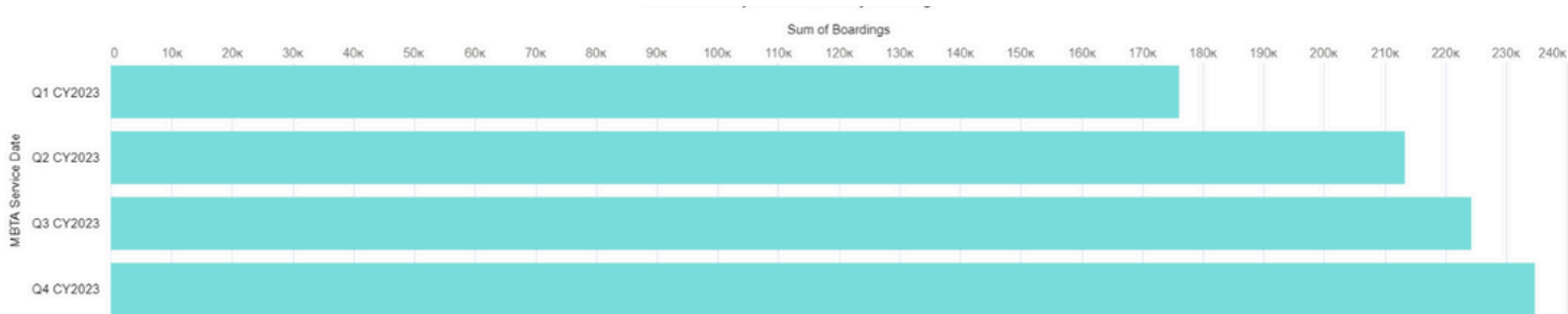
## Annual Vehicle Count Assembly Square



## MBTA Orange Line Assembly Station Boardings

Assembly Connect uses MBTA station boarding data to track ridership on the Orange line at Assembly. Data collected represents those passengers that board the Orange line at Assembly. Orange line ridership continued to show growth each quarter in 2023, in spite of continued slow zones, service sporadic weekend shutdowns, and service interruptions.

### 2023 Assembly Station Quarterly Boardings







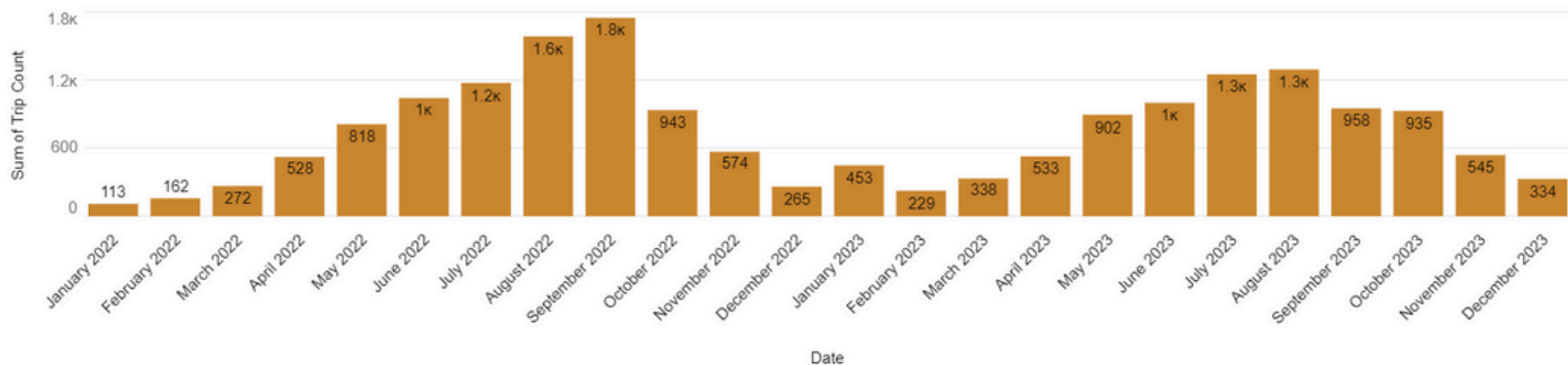
## Bluebikes Station Starts at Assembly/ Annual Memberships

Assembly Square has two Bluebikes stations. One located at the Assembly Orange Line MBTA station and one at the corner of Grand Union Blvd. and Foley St. 2023 showed an overall small decrease in ridership from the previous year. This was due to the unprecedented ridership in the summer of 2022 due to free systemwide Bluebikes during the MBTA shutdown. Considering this one-time occurrence in 2022, ridership grew modestly in all other months from 2022 to 2023. Bluebikes continues to be a large part of sustainable transportation at Assembly. In 2023, Assembly Connect subsidized 29 annual Bluebikes memberships.



**1,758 mi**  
biked by Assembly Connect Bluebikes program members in 2023

## 2022 vs. 2023 Monthly Bluebikes Starts



# Accomplishments



## Outstanding TMA Award 2023

Assembly Connect was honored to be chosen as the 2023 recipient of the Outstanding TMA (Transportation Management Association) award at the Association for Commuter Transportation (ACT) 37th Annual International Conference in Seattle. This award is given to the TMA that is judged to have best used its public/private partnerships to achieve local or regional transportation goals, nationally. Winners are chosen for performing outstanding work to create accessible, sustainable, and robust transportation infrastructure to improve mobility.

Since forming in 2019, Assembly Connect has quantifiable and measurable goals in place to ensure that the drive-alone trips remain below 42,000 average daily trips. With the continued growth of the neighborhood, this goal can only be achieved through the activation of alternative commute modes. The TMA's programs are tracked at baseline, implementation, and ongoing system monitoring through various data networks including transit boardings, bikeshare station data, intersection data, and program participation data. Assembly Connect provides an excellent example of how a TMA can serve its members and local community.

*"As the TDM industry continues to evolve, strategies and initiatives must change along with it. Assembly Connect TMA is doing so, and actively responding to transportation challenges in a way that increases mobility and access for all people and businesses who live, work, and visit the Assembly Square neighborhood. ACT is honored to celebrate Assembly Connect TMA as the Outstanding TMA recipient for 2023 and their exemplary work in the industry."*

**David Straus**, Executive Director,  
Association for Commuter Transportation.



The Assembly Connect team is proud to be recognized for this award and looks forward to building on the work done by the TMA staff to make sustainable transportation more affordable and accessible at Assembly Square. The TMA would like to recognize that this achievement was also made possible by the group of supportive Board of Directors and the employees, residents, and visitors who continue to participate in the programs, engage, and attend outreach events, or simply by taking an interest in the work of the organization.



## MBTA Retail Pay-Per-Use Pass Program

In late 2022, the MBTA published a press release to announce their Pay-Per-Use limited fare program expansion and highlighted the local partners, which included Assembly Connect TMA. This story garnered attention from media outlets and was covered by Commonwealth Magazine and GHB News Radio.

From the success of the 2022 MBTA Retail Pay-Per-Use Pilot and from the data gathered, the TMA staff expanded the pilot in 2023 from a three-month subsidy to a six-month subsidy. In 2023, 229 new retail employees representing 50 different Assembly retail employers received an MBTA link pass, which provided them unlimited subway and bus trips. This was a 98% increase in the number of participants from 2022. Over the 12-month period, on average there were 81 active participants each month with an average cost of \$56.22/month per participant.

The public attention received from the press along with the program expansion, were contributing factors to the ongoing success of the program in 2023.

## MBTA Residential Pass Program

New Assembly residents are eligible to receive a free two-month MBTA Link pass. In 2023, 128 new Assembly Connect member residents across the six residential properties in the Assembly Square district; Revolution at Assembly (formerly Alta Revolution), AVA, Avalon, Miscela, and Montaje received an MBTA pass. This was a 46% increase in participants from 2022.

*"I am so grateful to Assembly Connect. Their retail pass program has made commuting to work so easy and affordable!"*

**Ashe**, Playmaker,  
LEGO Discovery Center Boston





## Walk For Kicks

In August, Assembly Connect developed its first program for pedestrians called, "Walk for Kicks". This program awards individuals with a \$50 gift card to an Assembly sneaker retailer of their choice for logging 100 walking trips on TripConnect. The goal of Walk for Kicks is to encourage individuals to travel by foot instead of by car when completing daily tasks, errands, or commutes.

Individuals can also unlock badges on their TripConnect dashboard for reaching trip-logging milestones in either the 'Errand', 'Commute', 'Recreation', or 'Dog Walking' categories; earning them a specific Assembly Connect merchandise item. Ethan, an AVA resident, was the first Walk for Kicks participant to earn a gift card to Nike in December 2023.

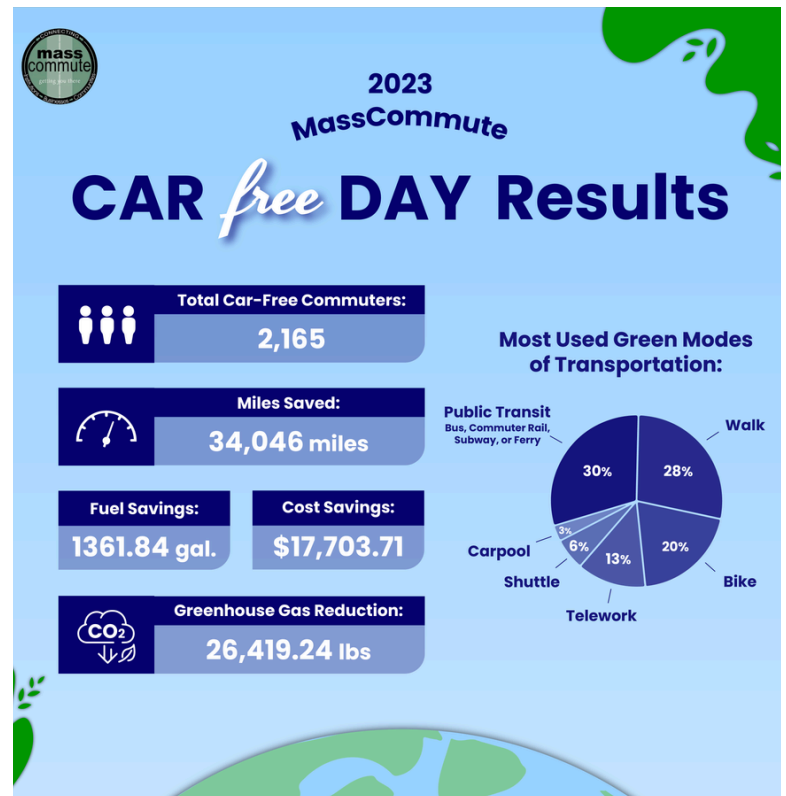


## MassCommute Car-Free Day

In September 2023, Assembly Connect in partnership with MassCommute, the coalition of Massachusetts Transportation Management Associations (TMA's) challenged commuters to 'Take the Pledge' to commute using an eco-friendly transportation mode on September 22nd. The Assembly Connect staff encouraged Assembly commuters to explore sustainable modes such as biking, walking, public transportation, telework, carpooling, or shuttles. By participating in this global movement, commuters made a positive impact on the environment and contributing to a greener Massachusetts.

### Assembly Connect Results

- Number of Pledges: 212
- "Most Popular" Mode: Public Transit
- 3027.6 Miles Saved



# Marketing, Events and Outreach



Marketing and events remain central to the TMA's efforts, serving as the primary means for staff to continue to connect, raise awareness, and build relationships around Assembly Connect's program and services. Throughout the year, our team focused on various events and promotions catering to Assembly employees, residents, and visitors. Here are the key project highlights from 2023:

- **Bike Breakfast** The TMA staff hosted two bike breakfasts. The purpose of the bike breakfast is to show appreciation for Assembly members who choose to use an alternative mode of transportation by biking to and from the district and to raise awareness of cycling as an option for travel at Assembly.
- **Employee Transportation Coordinator Social Hour** The Assembly Connect team hosted the TMA's first ever ETC Social Hour Event at the Assembly Connect office, located on Artisan Way. Assembly retail and restaurant ETC's were invited to join the event and got the chance to learn more about the programs and services Assembly Connect offers, to meet and network with other retail/restaurant managers, and enjoy some light refreshments.







- Tabling Events** Throughout the year, the Assembly Connect team participated in tabling events at various residential and commercial locations, including employee benefits fairs hosted by PUMA and Smartbear. At these events, the TMA staff distributed scratch-off cards which offer prizes or incentives from Assembly Connect, including points for TripConnect or merchandise items. The residential tabling events featured light refreshments and provided an opportunity for the Assembly Connect staff to engage with residents and promote the programs and services available to them as residents of Assembly Square.



2023



# 2023 Events

## January

- Member tabling event at Revolution

## February

- Find Your Carpool Match
- Bluebikes Winter Challenge

## March

- 2023 Annual Meeting

## April

- ABCs of Bike Maintenance Webinar with MassBike
- Member tabling events at Montaje and Miscela
- Earth Day Promotion
- Bike Clinic with Landry's

## May

- Assembly Connect May Bike Month Challenge
- Bike Breakfast
- PUMA Benefits Fair
- Bike Clinic with Landry's

## June

- Bike Clinic with Landry's
- Bicycle Users Group Meeting

## August

- Association for Commuter Transportation International Conference
- SmartBear Benefits Fair
- ETC Social Hour Event



## September

- "Welcome" move-in residential tote bags for Montaje/Miscela
- Car-Free Day

## October

- 'Follow My Commute' social media series
- Bike Breakfast

## November

- "Free Bike Lights" promotion

## December

- Assembly Row Ice Stroll
- Assembly Ornament Sales
- Telework Campaign

## Member Spotlight



LEGO® Discovery Center Boston is the first of the next generation of LEGO Discovery Centers in the Northeast. It is the home of LEGO play, where families can create their own adventures in the ultimate indoor LEGO playground with more than two million bricks. Early on, LEGO has proven to be a valued partner and supporter of Assembly Connect's mission and goals.

Recently, LEGO Discovery Center went through a 12-million-dollar renovation – temporarily closing their doors from September 2022 to May 2023. During this time, they continued to hire new staff, expanding their team in preparation of reopening their doors in Spring of 2023. As part of their hiring process, the TMA's MBTA pass program served as useful during their recruitment process. In total, 23 MBTA passes were provided to new hires through Assembly Connect's retail pass program from their reopening to the end of 2023. In addition to taking advantage of this program, LEGO continues to highlight the ease of accessibility traveling to their location via public transportation on the Orange Line.

The newly renovated LEGO® Discovery Center Boston, the first of its kind, will give families who visit Assembly Row the opportunity to experience the next generation LEGO Discovery Center with interactive indoor LEGO® play experiences including a ride, 4D theatre and creative workshop.

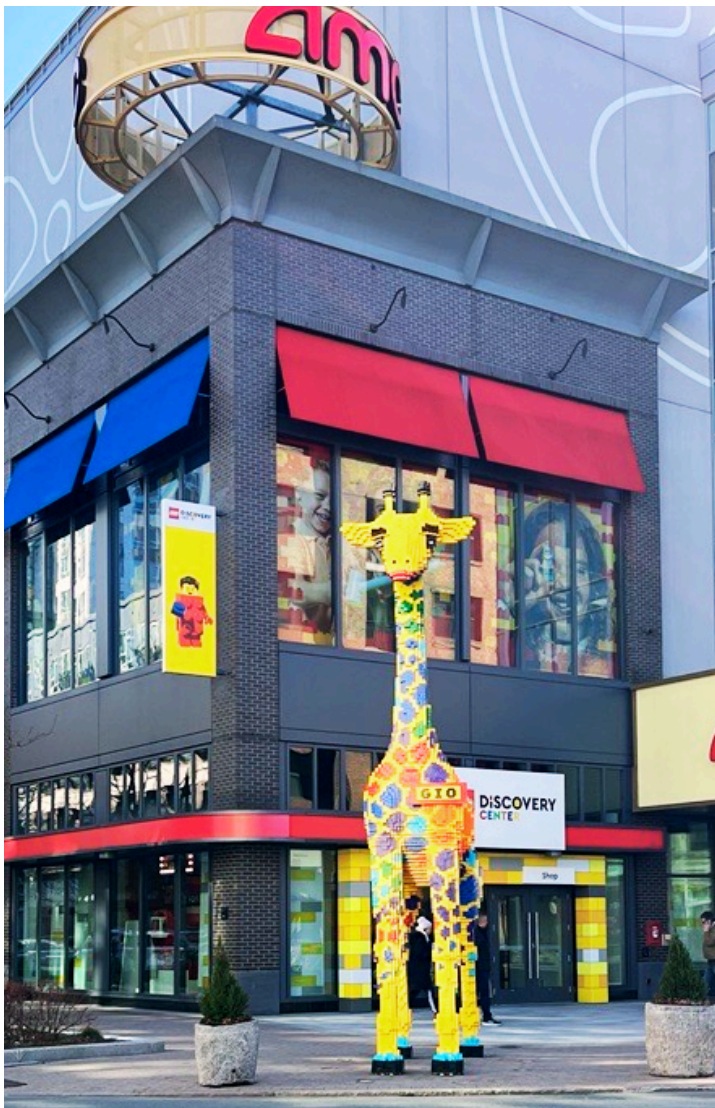
LEGO was one of the first organizations at Assembly to have met and collaborated with the TMA staff on some of Assembly Connect's pilot programs. In September of 2019, Assembly Connect hosted Assembly Square's very first "Park(ing) Day" event. Parking Day is a global and public project that takes place in September. This event raises awareness about the importance of reimagining public areas by taking metered parking spaces and transforming them into mini parklets for public activities. LEGO willingly offered to volunteer their time and staff to host a parklet. They transformed a metered parking spot in front of their business by furnishing the space with tables and Duplo builds for the community members to come and enjoy. Residents, employees, and visitors made public transit buses, trains, ferries, and carpools using LEGO's Duplo sets they provided for the event.



Photo courtesy of Federal Realty Investment Trust Instagram  
PARK(ing) Day 2019 hosted by Assembly Connect



In addition, LEGO management and staff continue to support the TMA's program and services and have consistently promoted them to new employees during their recruitment and onboarding process. The Assembly Connect staff is excited to continue the partnership that has been created here and look forward to many more collaborations throughout the years. Assembly Connect has plans to focus on the visitor piece in 2024 to address the transportation needs for people who visit the district and will look for insight from LEGO Discovery Center, as a leading attraction to visitors at Assembly Row.



*“Assembly Connect’s MBTA Retail Pass Program has been a huge asset to the LEGO® Discovery Center Boston team. Many of our new employees benefit tremendously from the program. This has made our employees commute in and out of work seamlessly. Having this benefit to offer to our new employees helped with the recruiting process when we re-opened our doors after a \$12M renovation in May 2023.”*

**Cecilia Hennessy**, Marketing Manager,  
LEGO Discovery Center Boston



# Advocacy & Collaboration

In the spring of 2023, TMA Executive staff (along with members of MassCommute) met with MassDOT Secretary Monica Tibbitts-Nutt and Deputy Secretary Hayes Morrison. The group discussed program design and funding mechanisms developed by MassCommute by which the 25M in Bond Bill funding will be distributed to the 15 Massachusetts TMAs. This process is ongoing and is expected to be in place for all TMAs to receive Bond Bill funds for FY2025.

In addition to working on the Bond Bill, staff at Assembly Connect collaborated with Representative Jonathan Hecht (Watertown), to advocate for several Transportation Demand Management (TDM) bills in the Massachusetts legislature that support the mission of Assembly Connect.

The TMA staff also worked with the MassCommute Managing Director to develop and implement a webinar to promote TDM to communities, businesses, and developers, "Influencing Travel Choice in Massachusetts." The event was attended by more than 80 people.

Finally, Assembly Connect served on the MassDOT Transit Mobility and Outreach and Communication Groups formed to address the eight-week closure of the Sumner Tunnel in the summer of 2023. These groups of key stakeholders, TMAs, transit advocates and MBTA and MassDOT staff met for several weeks prior to the closure to ensure that the public was aware of the dates and to provide sustainable transportation options and

marketing to mitigate the impacts on traffic. The group will convene again for the closure planned in the summer of 2024 as well.



# Looking Ahead

The future is bright for Assembly Connect. Education, marketing, and advocacy will continue to be the foundation of our work; however, in addition in 2024, the Board will be looking to make a capital investment in infrastructure through our major mobility project fund with the siting and design of the first mobility hub for Assembly Square. This mobility hub will provide multiple transportation options and amenities at one convenient location and be an important step in accommodating two new future bus routes planned for Assembly through the MBTA's Bus Network Redesign.

In 2024, the Assembly team will be focusing on visitor trips to the area and learning more about the travel patterns of those who come to Assembly for shopping, dining, and entertainment. This enhanced understanding of visitor behavior will be applied to marketing events and messaging to help visitors to choose transit, walking, or biking for their day-to-day trips to Assembly.

Assembly Connect will continue to work closely with partners at the MBTA and MassDOT to navigate a challenging year of construction and track improvements. With the planned shutdown of the Orange, Red, Blue, and Green lines for a total of twenty weeks; communication and support of our transit riders will be crucial. There will be several additional construction projects in 2024 affecting areas around Assembly, including the second Sumner Tunnel Closure in the summer and Maffa Way and Mystic Ave bridge projects planned for spring, which will require additional traffic mitigation measures for those who currently drive.

Assembly Connect is excited to continue to change behavior and meet mode-shift goals set by our Board and the City of Somerville. The TMA continues to support its members and program participants and looks to form new relationships to enhance the quality of life, accessibility, and vitality of Assembly Square. The staff hopes that you will join the TMA in this important work!







# Contact Us

**General Email**, [info@assemblyconnect.com](mailto:info@assemblyconnect.com)

**Andrea Leary**, Executive Team, [aleary@northeastconsulting.com](mailto:aleary@northeastconsulting.com)

**Allison Simmons**, Executive Team, [asimmons@northeastconsulting.com](mailto:asimmons@northeastconsulting.com)

**Stephanie Le**, Assistant Director of Marketing & Programs, [sle@assemblyconnect.com](mailto:sle@assemblyconnect.com)

**Olivia Saccocia**, Marketing and Programs Coordinator, [osaccocia@northeastconsulting.com](mailto:osaccocia@northeastconsulting.com)

**Madelyn Langley**, Marketing and Programs Coordinator, [mlangley@northeastconsulting.com](mailto:mlangley@northeastconsulting.com)



**NORTHEAST**  
CONSULTING GROUP



[assemblyconnect.com](http://assemblyconnect.com)



[@assemblyconnect](https://www.instagram.com/assemblyconnect)



**TripConnect** [assemblytripconnect.com](http://assemblytripconnect.com)  
by assembly connect